

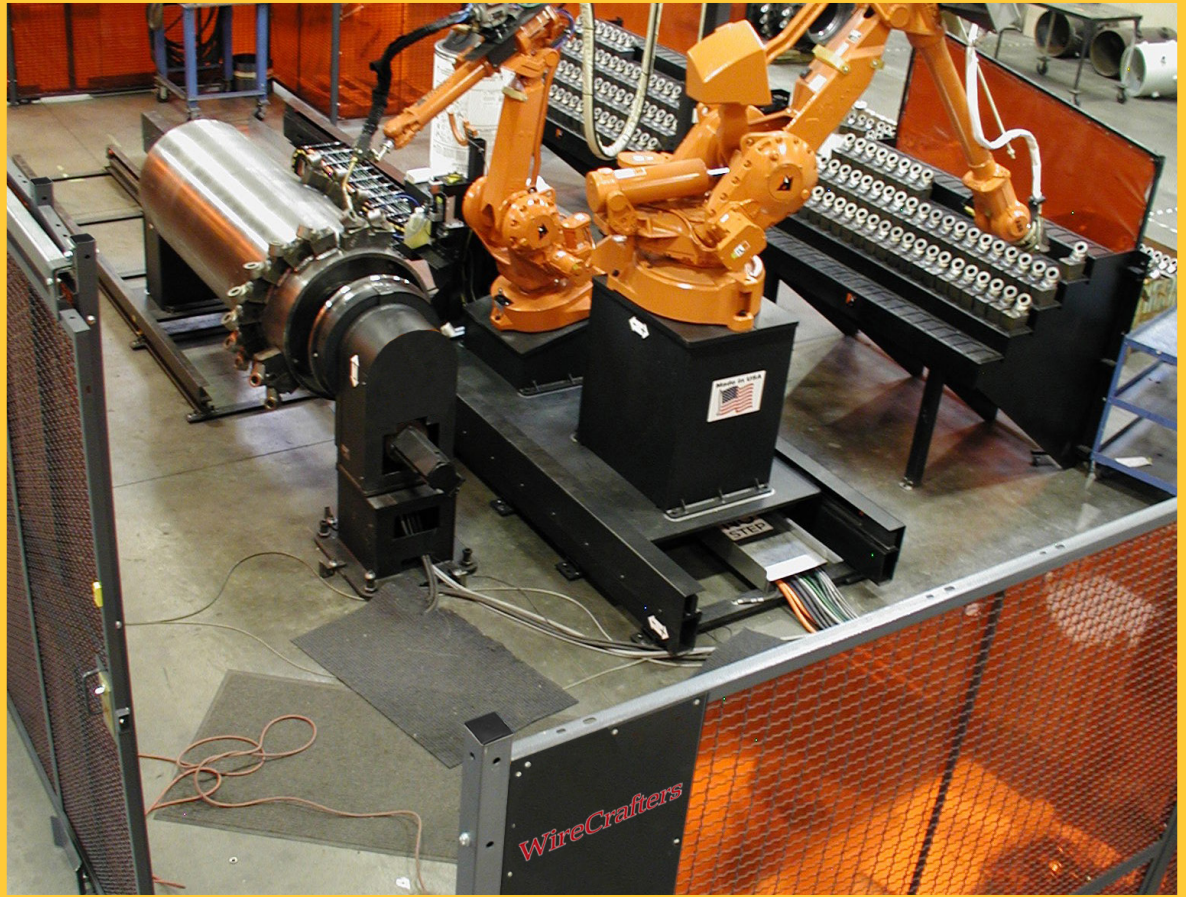


# Machine Guarding

Welded and Woven Wire Barriers

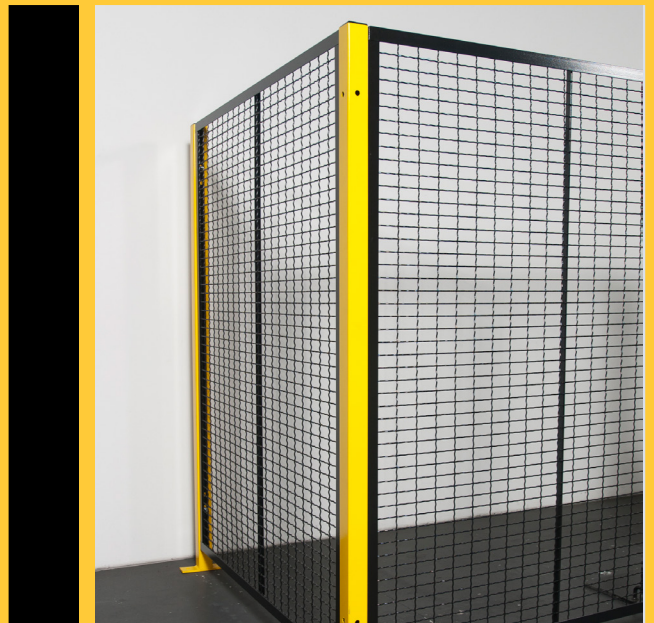
PHYSICAL BARRIERS ■ WELD CELLS ■ ROBOTIC WORK CELLS ■ PERIMETER + AREA GUARDS

WireCrafters®



WireCrafters® is the nation's leading manufacturer of Wire Partitions, Wire Cages and Wire Machine Guarding Systems. Our woven and welded wire mesh systems are uniquely designed to your specific application utilizing stocked and custom components for quick shipments.

[wirecrafters.com](http://wirecrafters.com) • 800-252-2636 • [info@wirecrafters.com](mailto:info@wirecrafters.com)



# 5' STANDARD GUARD SYSTEM

# Machine Guard

10 GA 2" x 1" Woven Wire

QUICK SHIP

## Versatile, Economical, Safe...

Machine Guards from WireCrafters® are a simple, effective way to protect personnel from the dangers posed by automated equipment. These barriers are a strong and economical solution to plant safety needs. Versatility of this system allows easy integration of access doors or larger openings with system controls.

Machine Guarding also doubles as a safety net by containing malfunctioning equipment. Crimped and woven wire mesh is extremely resilient; it resists dings, retains its shape, and is virtually maintenance free.

## OSHA AND ANSI/RIA COMPLIANT...

The WireCrafters standard physical barrier system combines a 5' high panel and 5'-3 1/4" high posts and complies with Safety Standards for machine perimeter guarding.

## OSHA and ANSI/RIA R15.06-2012

## Quick Ship...

Our standard Guard Systems are available for 48-hour shipping. All Quick Ship items are only available in standard gray.



STANDARD 5'-3 1/4" GUARD SYSTEM 5'-3 1/4" POSTS, 5' HIGH PANELS, 3 1/4" SWEEP

### PANELS

Part No.	Width x Height	Weight
105	10'-0" x 5'-0"	74
95	9'-0" x 5'-0"	68
85	8'-0" x 5'-0"	63
75	7'-0" x 5'-0"	54
65	6'-0" x 5'-0"	48
55	5'-0" x 5'-0"	42
45	4'-0" x 5'-0"	36
35	3'-0" x 5'-0"	27
25	2'-0" x 5'-0"	22
15	1'-0" x 5'-0"	16

### POSTS

Part No.	Height	Sweep Space	Weight
RP5	5'-3 1/4"	3 1/4"	18
CP5	5'-3 1/4"	3 1/4"	18

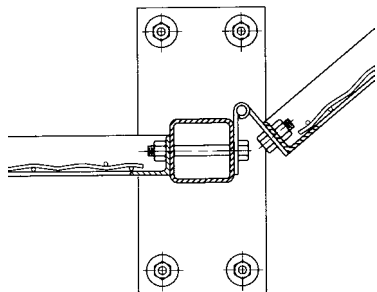
### DOORS

Part No.	Opening Width	Type	Weight
HDR355	3'-0" x 5'-0"	Hinged	81
HDR455	4'-0" x 5'-0"	Hinged	86

(Each door supplied with two door posts and door hardware. Specify lock or latching options from below.)

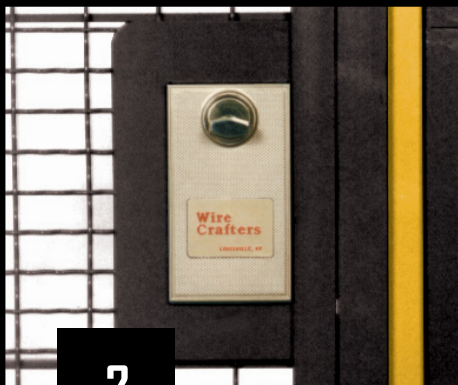
**FREE**  
DESIGN & LAYOUT ASSISTANCE  
800-252-2636

### ADJUSTABLE HINGE PACKAGE (ADJPK)



TOP VIEW OF ADJUSTABLE MOUNTING BRACKET

### STANDARD LATCH FRONT (SF-2)



### STANDARD LATCH BACK (SB-1)



# 8' STANDARD GUARD SYSTEM

## Full Height Systems

OSHA  
&  
ANSI/RIA  
COMPLIANT

### SPECS

#### WALL PANELS

- Ten widths, 1' to 10' in one-foot increments.
- Standard panel height is 4'-0".
- Full height partition walls are built by stacking two panels between posts.
- Mesh: 10 GA wire woven into 2" x 1" rectangular openings.
- Frame 1-1/4" x 1-1/4" x 1/8" steel angle.
- Custom size panels available.
- Alternate meshes available, see page 4.

#### HINGED DOORS

- 3' or 4' wide by 7'-3 1/4" high opening.
- 1' Transom panel sized to match partition height.
- Three 4" x 4" 10 GA tight pin hinges.
- Padlock lugs standard, other locks available.
- Ships with two door posts and hardware.
- Universal construction, works for left or right hand, inside or outside swing.

#### DOUBLE-HINGED DOORS

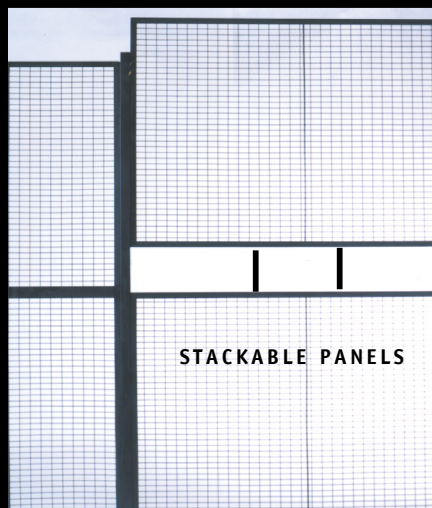
- 6' or 8' wide by 7'-3 1/4" high opening.
- Inactive leaf secured by cane bolt (base) and chain bolt (top).
- Padlock lugs standard, other locks available.
- Ships with two door posts and hardware.
- 1' Transom panel sized to match partition height.
- Custom and no overhead obstruction doors available.

#### SLIDING DOORS

- 3', 4', 5', 6', 8' or 10' widths.
- Full height partition openings of 8'.
- Padlock lugs standard, other locks available.
- Ships with two door posts, two 4-wheel trolley trucks, 16 GA track, and all hardware.
- Universal construction, works for left/right hand, inside/outside.
- Custom sizes available.

#### POSTS

- Stock size: 8'-5 1/4".
- Standard hole layout allows for 3 1/4" sweep space.
- Posts project 2" above top of panel.
- Standard Baseplate: 2"x7" with anchor holes.
- 3/8" floor anchors included.



STACKABLE PANELS



STANDARD 10'-5" AND 12'-5" BARRIER SYSTEMS OF SIMILAR CONSTRUCTION ARE ALSO AVAILABLE.

### STANDARD 8'-5" GUARD SYSTEM

#### PANELS

Part No.	Width x Height	Weight
104	10'-0" x 4'-0"	63
94	9'-0" x 4'-0"	58
84	8'-0" x 4'-0"	53
74	7'-0" x 4'-0"	46
64	6'-0" x 4'-0"	41
54	5'-0" x 4'-0"	36
44	4'-0" x 4'-0"	31
34	3'-0" x 4'-0"	23
24	2'-0" x 4'-0"	18
14	1'-0" x 4'-0"	13

#### STOCK SIZE POST

Part No.	Height	Weight
RP-8		
Run	8'-5 1/4"	20
CP-8/TP-8		
Corner/Tee	8'-5 1/4"	21

#### HINGED DOORS

Part No.	Opening	Width x Height	Weight
HD-37-8	3'-0" x 7'-3 1/4"		106
HD-47-8	4'-0" x 7'-3 1/4"		118

#### DOUBLE-HINGED DOORS

Part No.	Opening	Width x Height	Weight
DHD67-8	6'-0" x 7'-3 1/4"		170
DHD87-8	8'-0" x 7'-3 1/4"		193

#### SLIDING DOORS

Part No.	Width x Height	Weight
SD-38-8	3'-0" x 8'-0 1/4"	124
SD-48-8	4'-0" x 8'-0 1/4"	137
SD-58-8	5'-0" x 8'-0 1/4"	149
SD-68-8	6'-0" x 8'-0 1/4"	196
SD-88-8	8'-0" x 8'-0 1/4"	230
SD-108-8	10'-0" x 8'-0 1/4"	279

### ALTERNATE LATCH FRONT (SF-3)



Door Knob Entry...  
latches only, does not lock.

### ALTERNATE LATCH BACK (SB-3)



Door Knob...typical size  
door knob for easy exit.

### ALTERNATE LATCH BACK (SB-4)



Lever Handle... alternative to standard  
door knob. Meets ADA requirements.

# Machine Guard Options

Welded and Woven Wire Barriers

## ALSO AVAILABLE

## OPTIONAL COLORS, ACCESSORIES AND MORE



CUFF LATCH LOCKING  
MECHANISMS

### SPECIAL COLORS

As an option, you may request your barriers to be black panels and yellow posts. We can also match RAL numbers and can provide your barriers with many different finishes. All special colors are powder-coated. Yellow or black panels and yellow posts ship in one week.

### LIFT-OUT PANELS

System offers Lift Out Panels for frequently accessed areas and Removable Panels for entry points that require more control. These panels may be combined with standard panels and posts at any location in the system.

### CUSTOM HEIGHTS

WireCrafters' physical barriers are not limited to the standard heights detailed on pages 2 and 3. We can supply physical barriers to any height you may require.

### WELD CURTAINS

Weld curtains, sized to match panel dimensions, are available in a variety of colors. Curtains protect personnel from welding flash and sparks.

### INTERLOCK MOUNTING PLATES

Should you prefer to use an interlocking system, WireCrafters can provide mounting plates and prep the doors for your interlocking device.

### CUT-OUT PANELS

Non-standard size panels, panels with cutouts or pass-thru openings can be integrated into your system.

### SLIDING TUNNEL DOORS

Sliding Tunnel Doors have unobstructed openings. Leading edge of door rolls on floor casters with locking and latching options available.

FORTRESS INTERLOCK  
SYSTEMS



## CUSTOM WELD CURTAINS



## CUSTOM CUTOUTS AVAILABLE



## SPECIAL MESH

### WOVEN MESH

1/2" square*	12 GA (3/8" sq. opening)
3/4" square*	10 GA (5/8" square opening)
1-5/8" square*	8 GA (1-1/2" sq. opening)
2-1/4" square*	6 GA (2" square opening)
304 Stainless Steel	Various

### WELDED MESH

1-1/4" x 2-1/2"	10 GA
2" x 2"	10 GA

### ALTERNATE SOLID PARTITIONS

Sheet Metal	16 GA
Polycarbonate	1/4"

\*center-to-center

6208 Strawberry Lane  
Louisville, Ky 40214  
800-252-2636 | F: 502-361-3857

WireCrafters.com  
info@WireCrafters.com